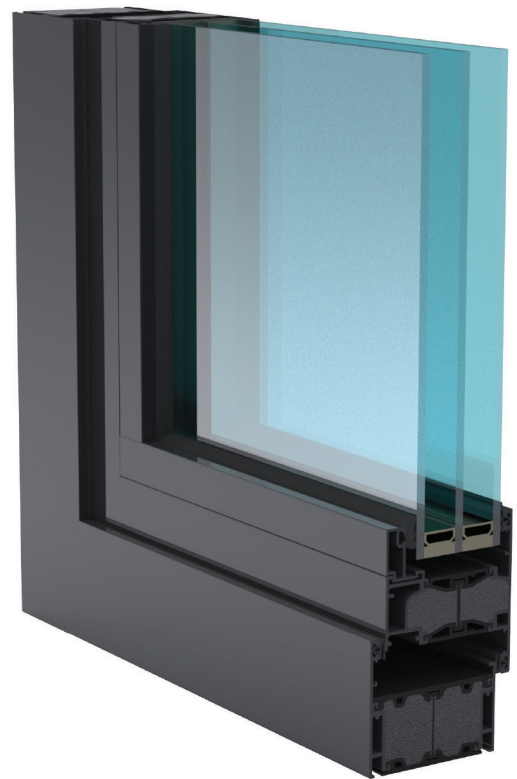


XT66

Casement Window System



The XT66 'Energy' Casement Window System has been developed to further enhance the performance and energy efficiency of our window suites. It is eco-friendly, sustainable, fully certified, patented aluminium window system. Measuring 66mm in depth. It can be glazed both internally or externally with 28mm through to 48mm units with a range of sash styles.



XT66

Casement Window System

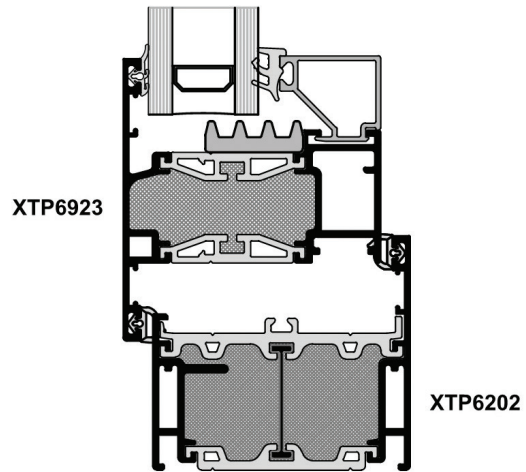
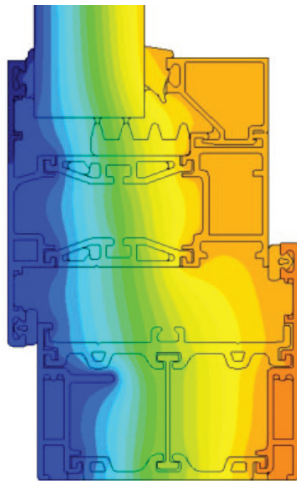
The system has been tested to IS EN 14351-1:2006+A2:2016 and security tested to PAS24:2022.

It reaches and excels the industry standards in weather and performances in all tests. The XT66 has excellent patented thermal technology and can achieve U-values as low as 0.9 W/m²K. It also boasts a heavy duty, Category 3 status (20,000 cycles), for repeated opening and closing.

U-VALUE TABLE

Window U-values as low as 0.90 W/m²K can be achieved depending on glass selection. Values are based on a window 1230 x 1480 with sash next to fixed pane. U values in the following table are calculated in accordance with EN 14315:1:2016, EN ISO 10077-1:2017 and EN ISO 10077-2:2017.

GLASS U-VALVE	1.2	0.53
Window U-value	1.6	0.9



SYSTEM PREFERENCES

- Air Tightness = Class 4 : 600 Pa
- Water Tightness = Class E900 (900Pa)
- Wind Resistance = 2400 (Class E2400A)
- Resistance to Racking and Static Torsion = Class 3
- Resistance to Repeated Opening and Closing = Class 3 (20K Cycles)
- Operating Forces = Class 1
- Tested to PAS24 : 2022 for Security

FEATURES & FINISHES

- Opening Options: Top Hung, Side Hung, Parallel Opening
- Finishes Include: Single/Twin Colour or "Decoral" Wood
- Internally or Externally Beaded
- Can Accommodate units up to 48mm in Thickness
- Patented Thermal Technology
- CEN Solution Gold Quality Standard
- Secured by Design

Wallingstown, Little Island, Cork, Ireland. **T** +353 21 4705100 **E** info@ams.ie **www.ams.ie**

