

XT66

Performance Plus

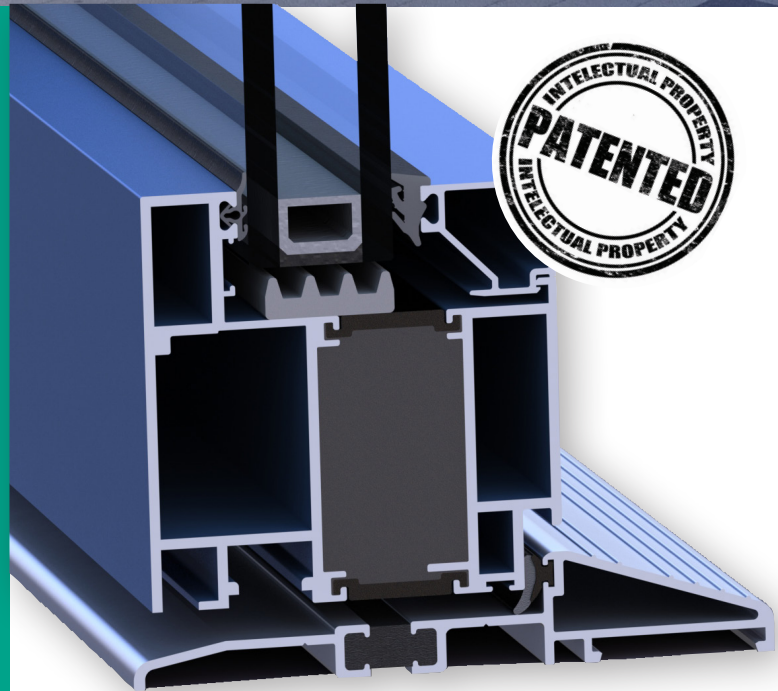
Rebated Door System



The AMS XT66 Performance Plus door system combines cutting edge architectural design features with market leading thermal performance. The system utilises patented “XT” thermal break technology platform developed in-house by AMS.

Following on from the XT66 door system, the XT66 PP incorporates upgraded features that increase reliability and performance. The design enhancements offer the client increased thermal efficiency and weather tightness with the introduction of a new gasketing configuration and component upgrades.

The XT66 Performance Plus door system is fully compatible with the XT66 Performance Plus window system and fully integrates with AMS MU series curtain wall systems.



XT66

Performance Plus

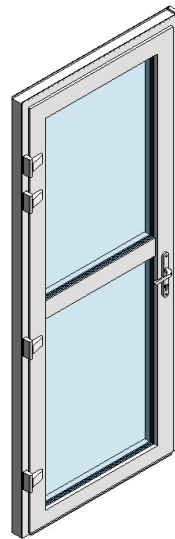
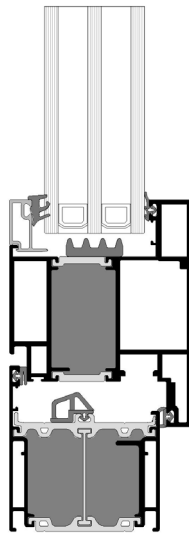
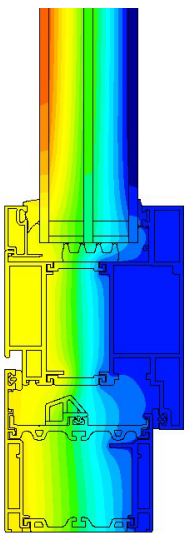
Door System

The XT66 Performance Plus door system is offered in AMS's finishing options including single and dual colour powder coatings, Decoral 'wood' finish coatings and anodised, all completed in-house at AMS. The system can be glazed with double and triple glazed units from 28mm up to 48mm, and multiple threshold options are available.

THERMAL DETAILS

Door U-values in the following table are based on a single door 1.23 m wide x 2.18 m high and a double door 2.0m wide x 2.18m high, both with a mid-rail and with threshold Option A. All glass units calculated with a warm edge spacer bar. U values in the following table are calculated in accordance with EN 14315:1:2016, EN ISO 10077-1:2017 and EN ISO 10077-2:2017.

GLASS U-VALUE (W/m ² K)	1.20	1.00	0.53
Single Doors with Mid Rail	1.5	1.3	1.00
Double Doors with Mid Rail	1.6	1.4	1.1



SYSTEM PERFORMANCE

- Air Classification – A4: 600 Pa
- Water Tightness – E750: 750 Pa
- Wind Resistance – E2400: 2400 Pa
- Security – PAS24:2022

FEATURES & FINISHES

- Open-out and open-in sash options with multiple threshold styles.
- Finishes include: single / twin colour polyester powder coating, Decoral wood finishes and anodised options.
- Accommodate units up to 48 mm in thickness.
- Patented thermal break technology.
- CENSolutions Gold standard certification.
- Secured by Design certified.

Wallingstown, Little Island, Cork, Ireland. **T** +353 21 4705100 **E** info@ams.ie **www.ams.ie**

