

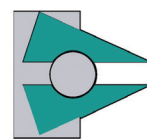
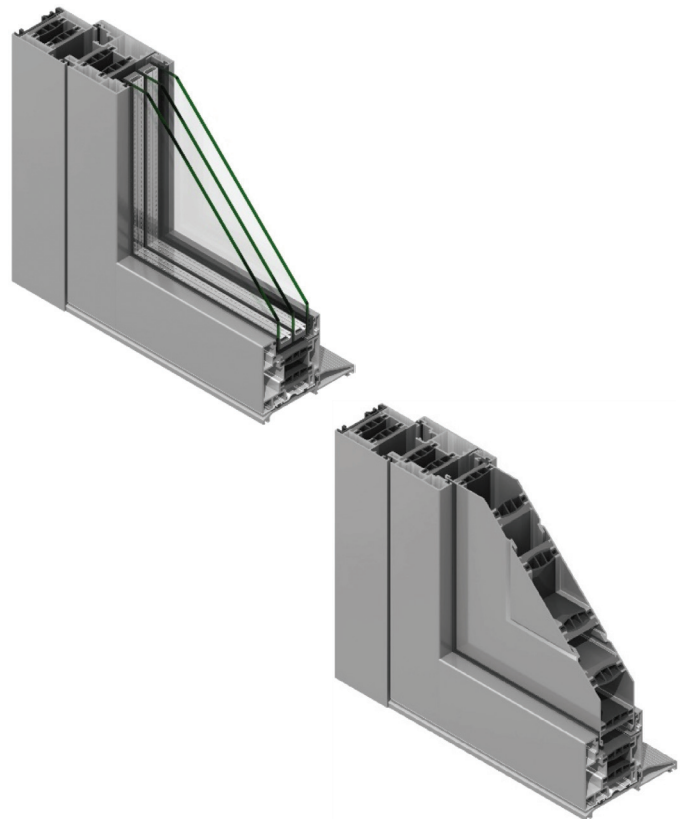


TS66

Thermstrip Rebate Door

The AMS TS66 Rebated Door System has been designed with the customer in mind. The 66mm depth allows for seamless integration with the multiple suites of AMS windows through the use of couplers and add-on profiles. In addition, the comprehensive range of threshold options available for the TS66 Rebated Door provides for multiple applications as required for our customer's needs and is particularly noted for its extreme strength and robustness.

We offer 2 heavy duty sash types offering the customer the peace of mind that both open in and open out doors are always internally glazed and fully "Secured by Design" certified.



AMS

Architectural & Metal Systems

TS66

Thermstrip Rebate Door

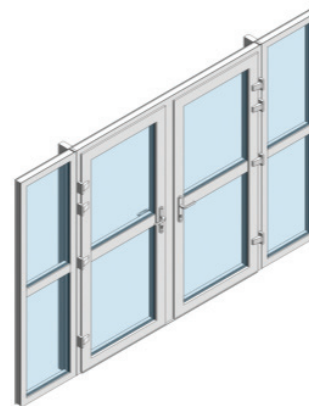
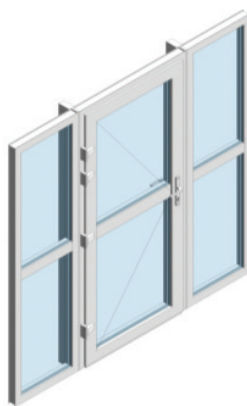
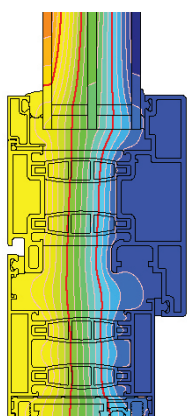
The unique and patented door design allows for profiles to be finished in a single RAL, Dual RAL, Anodic or Decoral wood finish or any internal/external combination of these finishes giving the customer the flexibility to achieve higher and wider sash leaf combinations for any architectural or aesthetic look imaginable.

The system has been tested to BS 6375 - 1 and security tested to PAS 24: 2016 and is Secured by Design Certified, ensuring the utmost of security. It satisfies industry standards in thermal and weather performance and achieved an up to 750 Pa in water tightness. Our patented thermal break technology allows for whole door U-values as low as 1.35 W/m²K.

TABLE

Table based on a single door 1.23 x 2.18 m high with midrail, a double door 2.0 m wide x 2.18 m high fully glazed with no midrail. Glass psi value taken as 0.05 for double glazing and 0.04 for triple glazing. All U-value calculations based on threshold option A.

GLASS U-VALUE (W/m ² K)	0.5	0.6	1.0	1.1	1.2
Single door U-value (W/m ² K)	1.42	1.45	1.75	1.80	1.85
Double door U-value (W/m ² K)	1.35	1.40	1.68	1.75	1.80



SYSTEM PERFORMANCE

- Tested to BS 6375-1:2015
- Air Classification = Class 4 (600Pa)
- Water Tightness = Class E750 (750 Pa)
 - open out
- Water Tightness = Class 9A (600 Pa)
 - open in
- Wind Resistance = Class E2400 (2400 Pa)
- Can be dual colour polyester powder coated or have wood effect 'Decoral' finish.

FEATURES & FINISHES

- Opening options: Side hung in and out
- "Secured by Design" certified
- Patented thermal break technology
- Can accommodate 28 to 48 mm glazing
- Sash sizes up to 1.3 m x 2.6 m high achievable
- T&G panel available with therm strip isolator
- Tested to 1,000,000 cycles on opening and closing

Wallingstown, Little Island, Cork, Ireland. T +353 21 4705100 E pohara@ams.ie www.ams.ie

